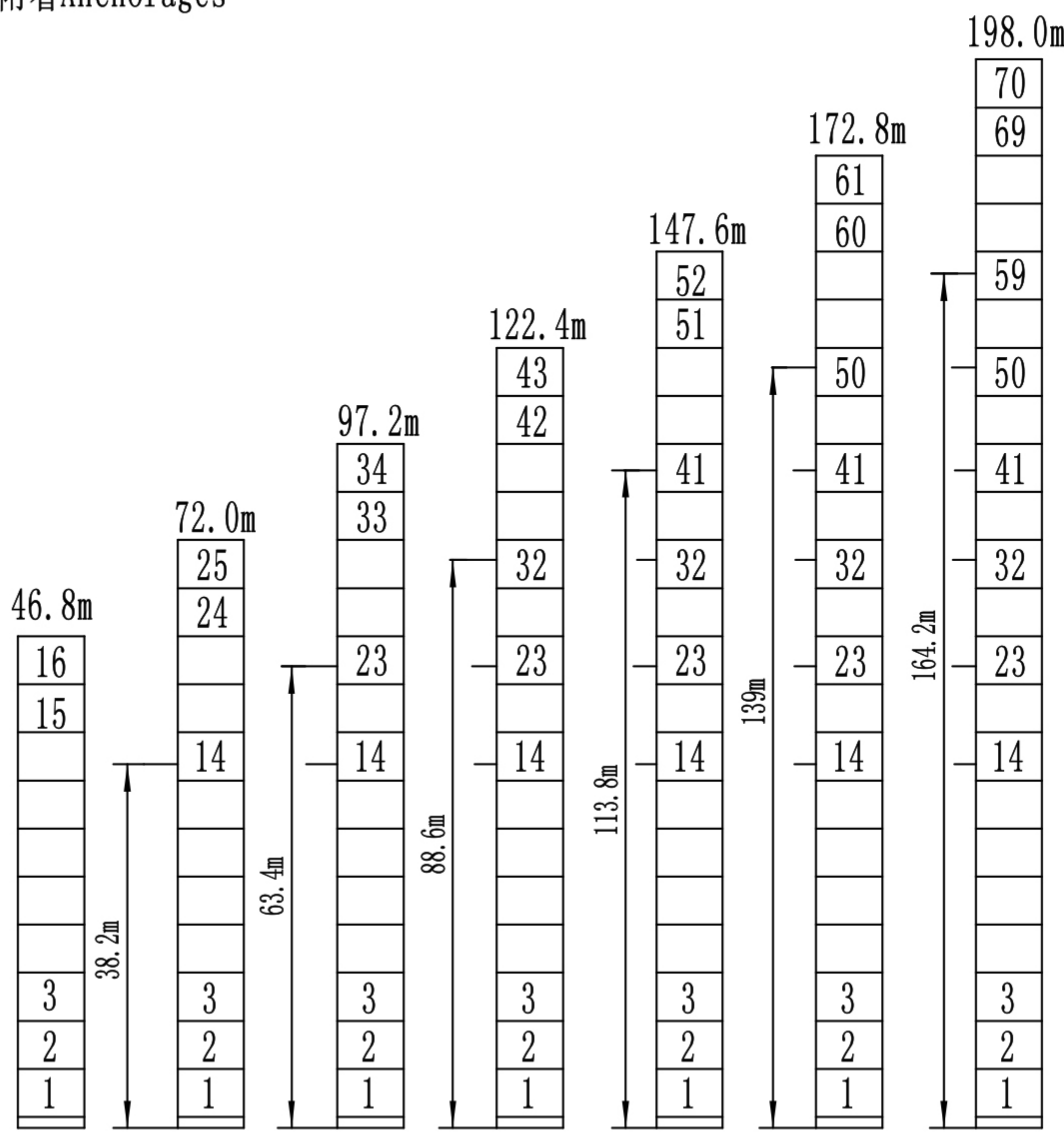
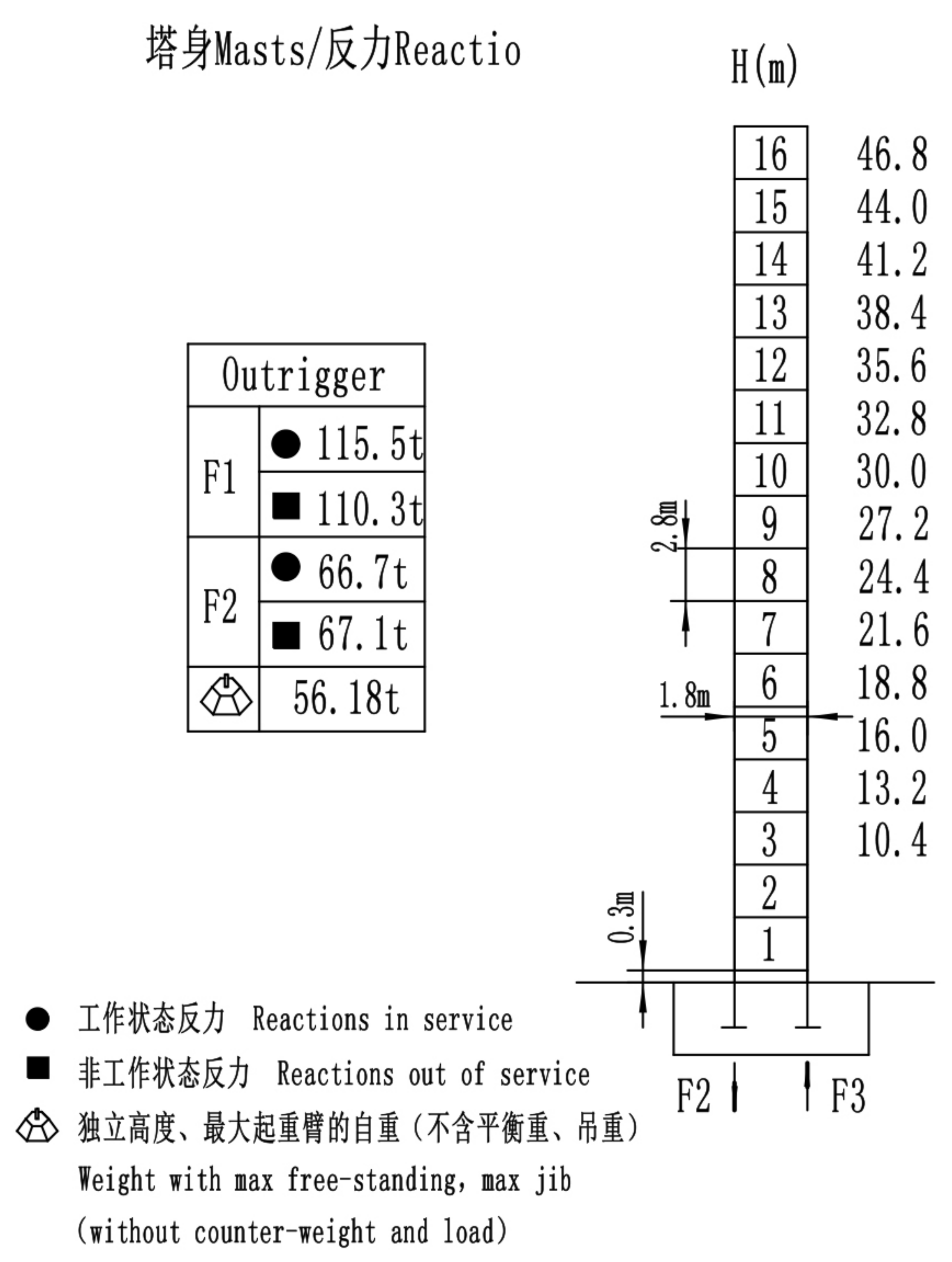


附着Anchorage



塔身Masts/反力Reaction



起重特性Load Diagrams

臂长 (m)	最大额定起重重量时的最大工作幅度 (m)	最大容量 (t)	最大工作幅度 (m)								
			20	24	30	35	40	45	50	55	60
60m臂 (R=61.46m)	bb	3-20.86/10.0t	10.00	8.56	6.66	5.57	4.75	4.12	3.61	3.19	2.85
	b	3-39.35/5.0t	5.00				4.90	4.27	3.76	3.34	3.00
55m臂 (R=56.46m)	bb	3-21.13/10.0t	10.00	8.69	6.76	5.65	4.83	4.18	3.67	3.25	
	b	3-39.85/5.0t	5.00				4.98	4.33	3.82	3.40	
50m臂 (R=51.46m)	bb	3-21.49/10.0t	10.00	8.85	6.89	5.77	4.93	4.27	3.75		
	b	3-40.53/5.0t	5.00				4.42	3.90			
45m臂 (R=46.46m)	bb	3-21.39/10.0t	10.00	8.81	6.85	5.74	4.90	4.25			
	b	3-40.35/5.0t	5.00				4.40				
40m臂 (R=41.46m)	bb	3-21.34/10.0t	10.00	8.76	6.79	5.68	4.85				
	b	3-40.00/5.0t	5.00								

传动机构Mechanisms

配置 Configuration	起升 Hoisting	回转 Slewing	变幅 Trolleying	功率 Power
45JTVF25	m/min: 0~90 t: 2.5	HP55.130.195 r/min: 0~0.6	BP5565X m/min: 0~58	45 kW
500m (6layers)	▲超出咨询我们 Consult us if overtop			
380V (±10%) 50Hz	61.5kW			